



COVID-19 Update

July 23, 2020



Discussion Topics

Where we are today

- What we're seeing now
- Putting the numbers into context
- Our surge capacity
- Testing
- Supplies
- Financial impacts
- What now?

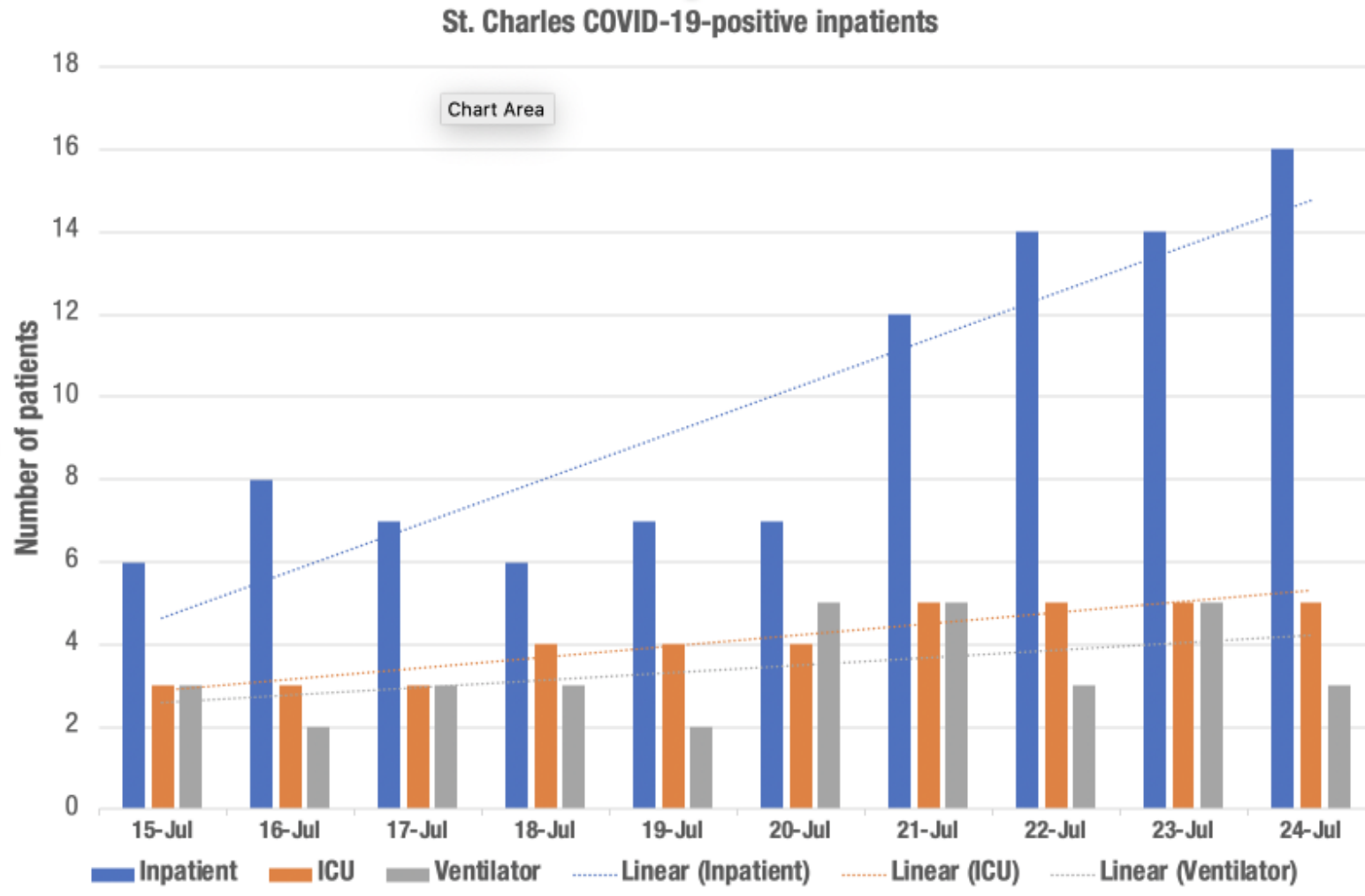
What we're seeing now

16 COVID-positive patients who are hospitalized

5 are in the Intensive Care Unit

- Our initial surge peaked at 14 patients on April 5. On Thursday, we hit a record high of 16 patients.
- Cases are increasing exponentially, placing mounting pressure on our health system.
- **If we remain on the current trajectory, our current model predicts that we could see a high of 31 hospitalized patients in two weeks.**

What we're seeing now



Putting the numbers into context

Home / COVID-19

COVID-19

Get the latest information about COVID-19 in Oregon.

> COVID-19

Resources for Businesses

Visitor Restrictions

Testing Information

Local, State and Federal Resources

Resources for parents

Hand-sewn masks

Current COVID-19 hospitalizations

Even though we are seeing patients that have tested positive for COVID-19, we have gone to great lengths to minimize your risk of exposure and help you feel comfortable during your visit. We want to reassure you that St. Charles hospitals and clinics continue to be [safe places to receive care](#). It is important for you to get the care you need when you need it – don't delay. We are here to take care of you.

As of **7:30 a.m. on Wednesday, July 22, 2020**, we have

- **14 COVID-19 patients**
- **Five** of the patients are in the ICU and three of those patients are on a ventilator

[Stcharleshealthcare.org/covid-19](https://stcharleshealthcare.org/covid-19)

Our surge capacity

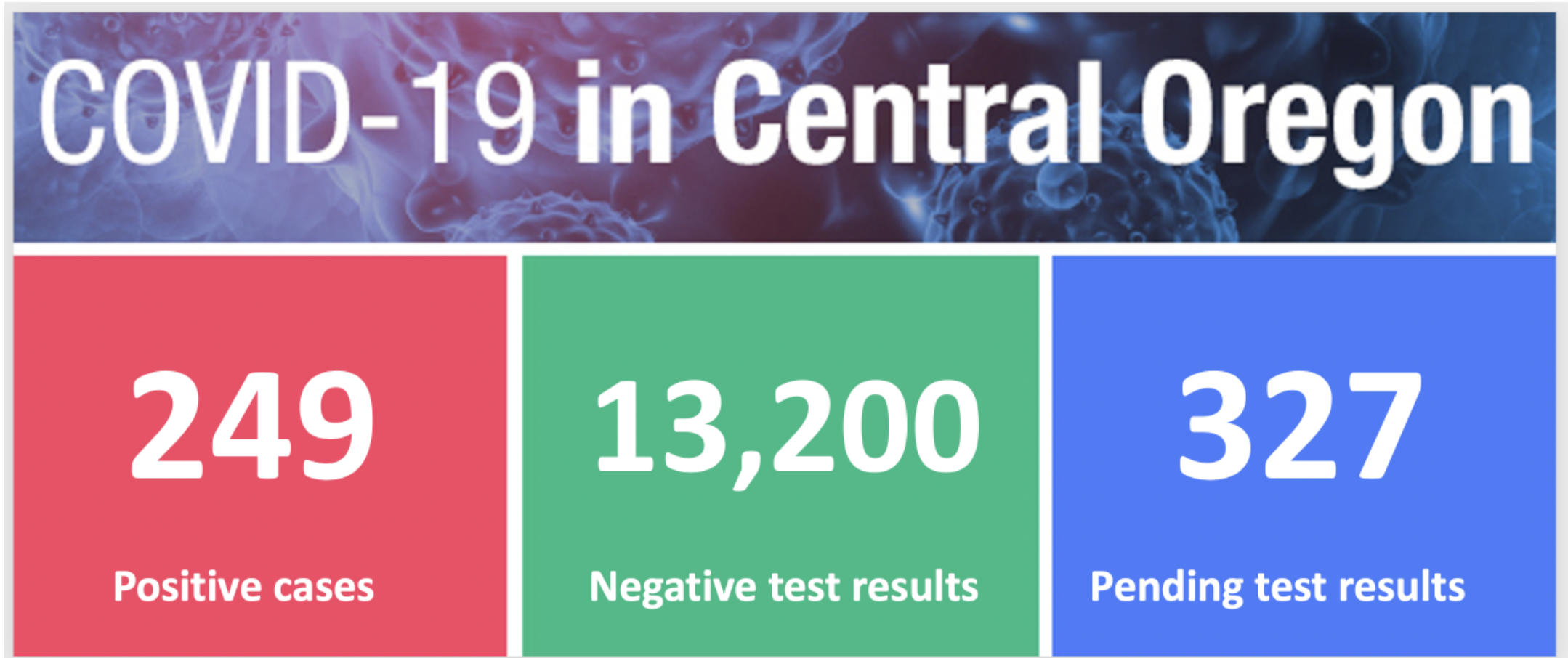
- So, what happens when our hospital beds are full?
- Under “normal” circumstances, we’d transfer additional patients to other hospitals in the region with available beds.
- Right now, we remain in a state of readiness to expand our bed capacity beyond our normal operating levels, if needed.
- However, doing so is a strain on our community and our caregivers. **And it’s preventable.**

Testing

13,000+ specimens collected



St. Charles' latest test numbers



Supplies

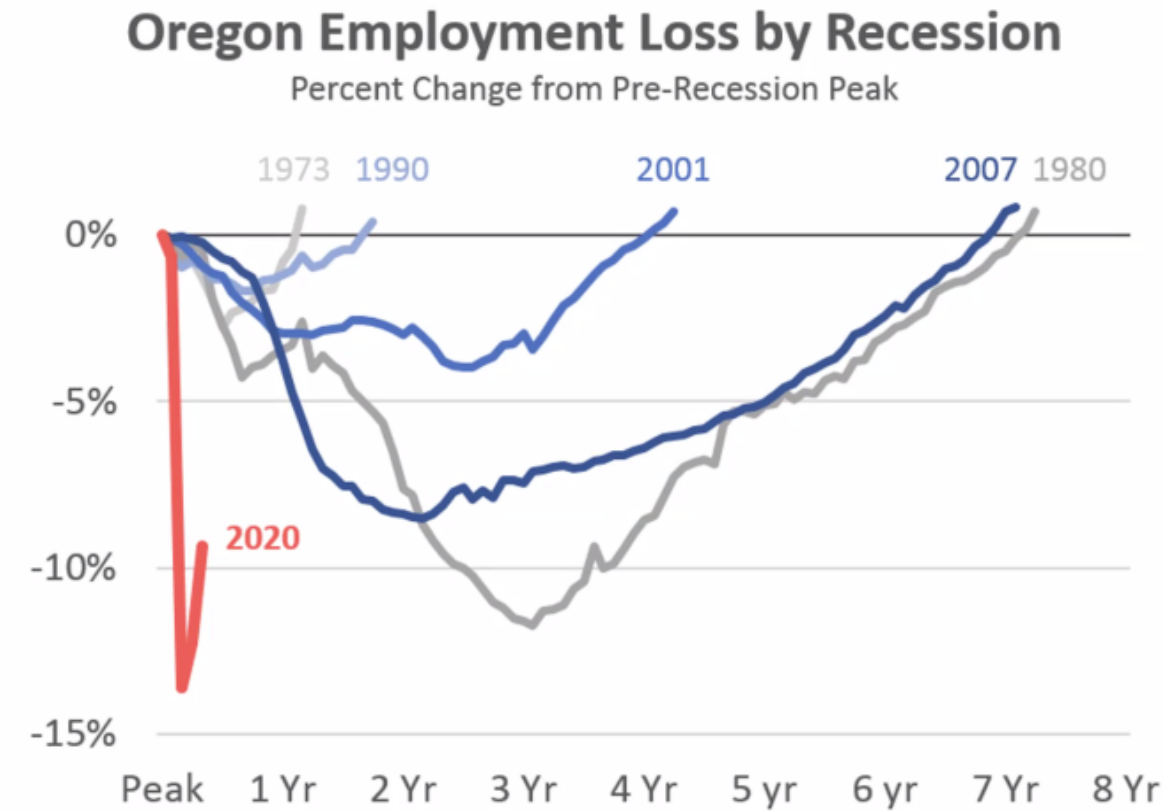


Financial impacts (immediate)

COVID Impacts:

- Our operating net loss through June 2020 is \$18 million – and that's after receiving \$22 million in CARES Act funding
- Volumes and revenues in June returned to within 5% of expectations, but this remains very fragile based on:
 - The overall patient flow that feeds into St. Charles (allowing surgical volumes)
 - And out of St. Charles (SNFs, nursing homes, etc.)

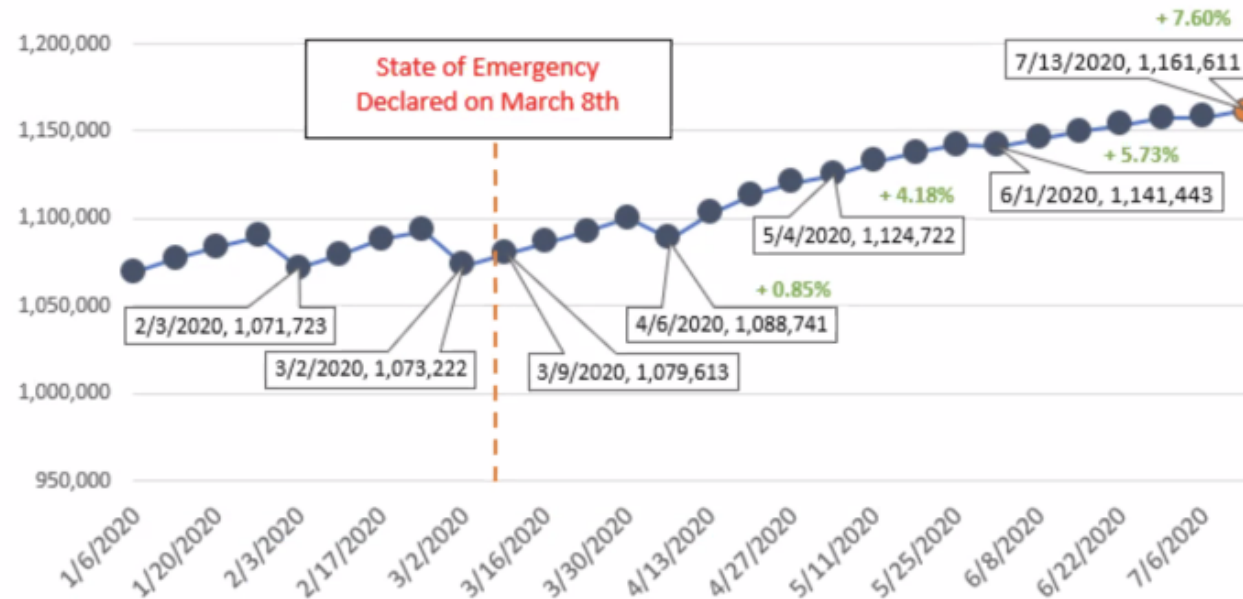
Financial impacts (long term)



Source: Oregon Employment Department, Oregon Office of Economic Analysis

Financial impacts (long term)

Total OHP Enrollment



What now?

Remember, we're safe for care

- From entrance screenings to dedicated space for COVID-19 patients, we're working hard to minimize your risk of exposure to the virus and other infectious diseases. Don't delay your care.

Stay well

- Wear a mask; practice good hand hygiene and maintain 6 feet of physical distance from those who are not in your immediate household

—
Thank you