



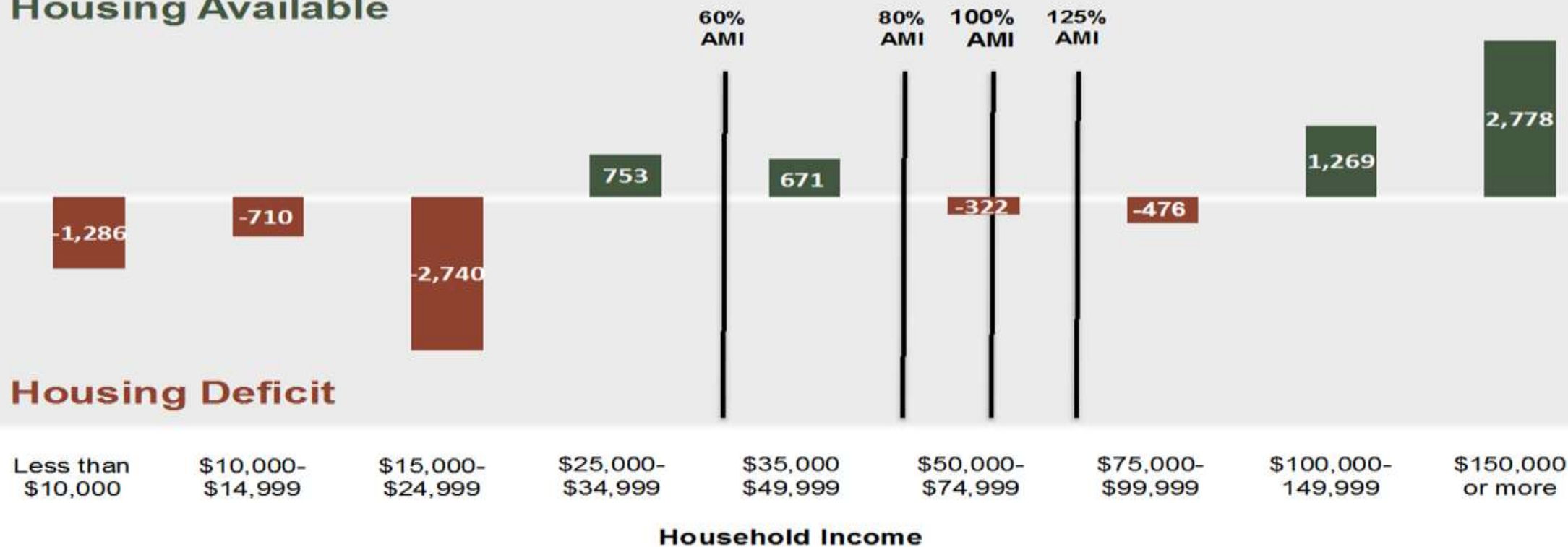
**BEND CHAMBER OF COMMERCE**  
**REAL ESTATE BREAKFAST**  
**HOUSING & TRANSPORTATION ISSUES**



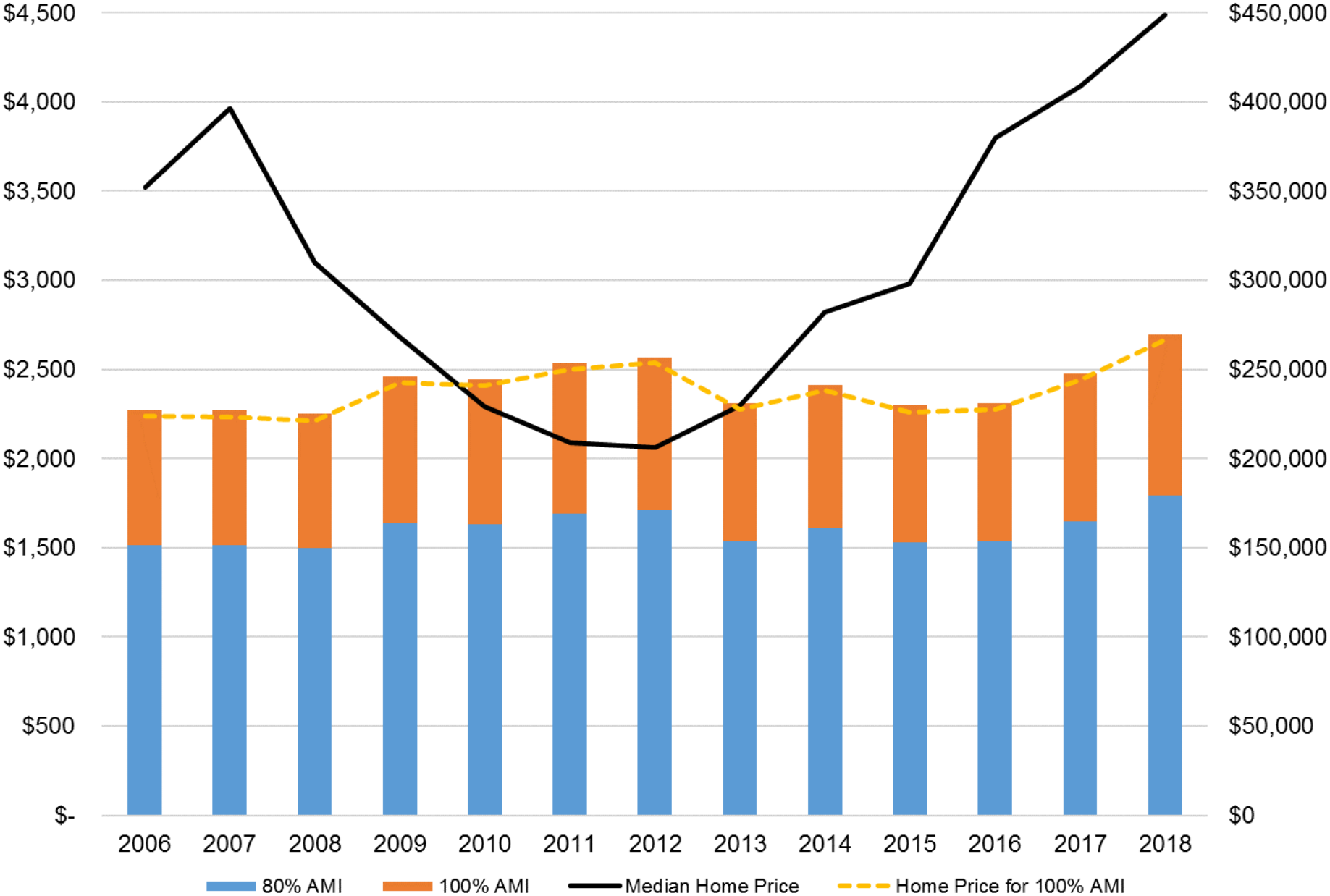
# Affordable Housing Costs and Units by Income Level

## Bend, 2015

### Housing Available



# Affordability of the Median Priced Home, Bend





# WHAT IS AFFORDABLE TO WHOM

IF YOUR HOUSEHOLD EARN'S THIS:

YOU CAN AFFORD THIS\*:

120% AMI  
\$83,520

RENT  
\$2,088

HOME PRICE  
\$320,000

100% AMI  
\$69,600

Civil Engineer  
\$73,126

RENT  
\$1,740

HOME PRICE  
\$267,000

Manager  
\$64,631

System Admin  
\$62,397

Teacher  
\$65,170

Sales Rep  
\$58,603

80% AMI  
\$55,680

RENT  
\$1,254

HOME PRICE  
\$216,000

System Operator  
\$53,215

Web Developer  
\$47,687

60% AMI  
\$41,760

RENT  
\$940

HOME PRICE  
\$162,000

Photographer  
\$40,778

Social Worker  
\$41,585

Nursing Assistant  
\$31,044

Salesperson  
\$30,420

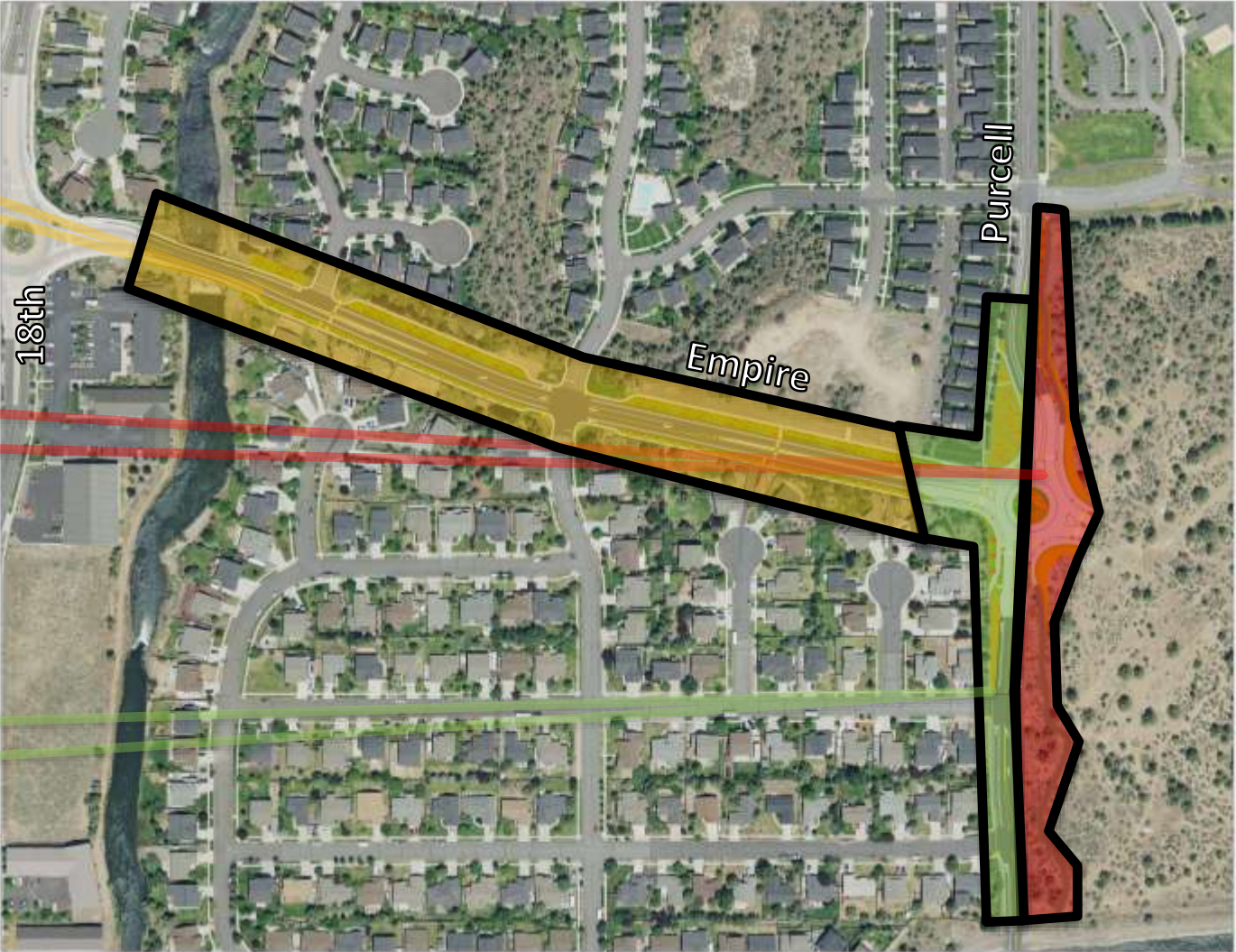
Recreation Worker  
\$27,582

\*Numbers based on 10% down payment, 5.443% interest over 30 years, \$250 mortgage insurance, no HOA, 630-689 credit score, and no debt.

# MURPHY ROAD



# EMPIRE ROAD

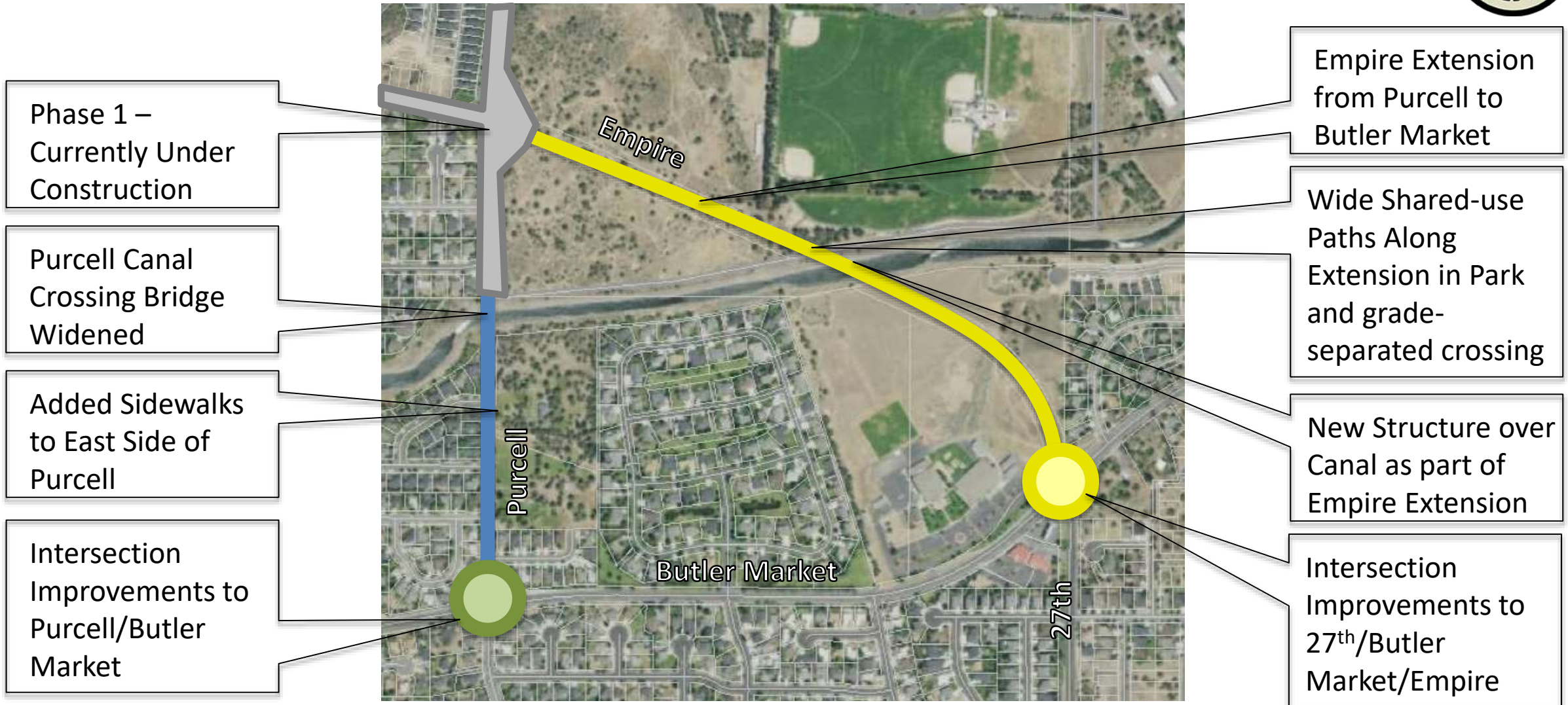


Stage 1 – Complete closure of Empire. Complete late November 2018

Stage 2 – Purcell Off-Street Improvements. December 2018 – April 2019 (Weather Dependent)

Stage 3 – Empire/Purcell closure. May 2019 – June 2019

# PHASE 2 SCOPE





- **Citywide Transportation Advisory Committee (CTAC) is making progress.**
- **Streets maintenance has been a focus and we've seen improvements to system.**
- **City investing in a new online permitting system that will be live this coming fall.**
- **Focus on Southeast & Core areas of town**
- **Repurposed Juniper Ridge Management Advisory Board**